

**RESOLUTION  
NO. 77-219**

**DEED FROM NASSAU COUNTY TO  
DEPARTMENT OF TRANSPORTATION ON  
S-115 PARCEL 100.1**

**NOVEMBER 8, 1977**

**MICROGRAPHICS**

*The Information and Image Managers*<sup>SM</sup>  
1925-A N.W. Second Street  
Gainesville, Florida 32609  
Phone: (352) 372-6039 – Fax: (352) 378-6039  
[www.micrographicsinc.com](http://www.micrographicsinc.com)

Parcel No. 100.1  
Section 74570-2605  
State Road S-115  
County of Nassau  
FAP No.

RESOLUTION # ~~77-218~~ 77-219

*also attached 77-220*

ON MOTION of Commissioner *Blackwell*, seconded by

Commissioner *Claxton*, the following Resolution was adopted: *this date November 8<sup>th</sup> 1977*

WHEREAS, the State of Florida Department of Transportation proposes to construct and improve State Road S-115, Section 74570-2605 in Nassau County, Florida: and

WHEREAS, it is necessary that certain lands now owned by Nassau County be acquired by the State of Florida for the use and benefit of the State of Florida Department of Transportation; and

WHEREAS, said property is not needed for County purposes; and

WHEREAS, the State of Florida Department of Transportation having made application to said County to execute and deliver to the State of Florida Department of Transportation a deed or deeds in favor of the State of Florida, conveying all rights, title and interest that said County has in and to said lands required for right of way for said State Road, and said request having been duly considered,

NOW, THEREFORE, BE IT RESOLVED by the Board of County Commissioners of Nassau County that the application of the State of Florida Department of Transportation for a deed or deeds is for right of way purposes which is in the public or community interest and for public welfare and the land needed for right of way and other road purposes is not needed for County purposes; that a deed or deeds in favor of the State of Florida conveying all right, title and interest of Nassau County in and to said lands required for right of way and other road purposes should be drawn and executed by this Board of County Commissioners. Consideration shall be \$ 1.00.

Signed by: *Douglas Hodges*  
Vice Chairman Board of County Commissioners

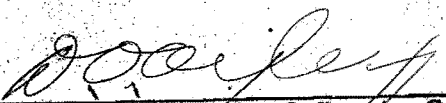
BE IT FURTHER RESOLVED that a certified copy of this Resolution be forwarded forthwith to the State of Florida Department of Transportation at Tallahassee, Florida.

STATE OF FLORIDA  
COUNTY OF NASSAU

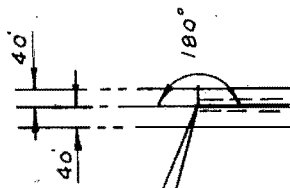
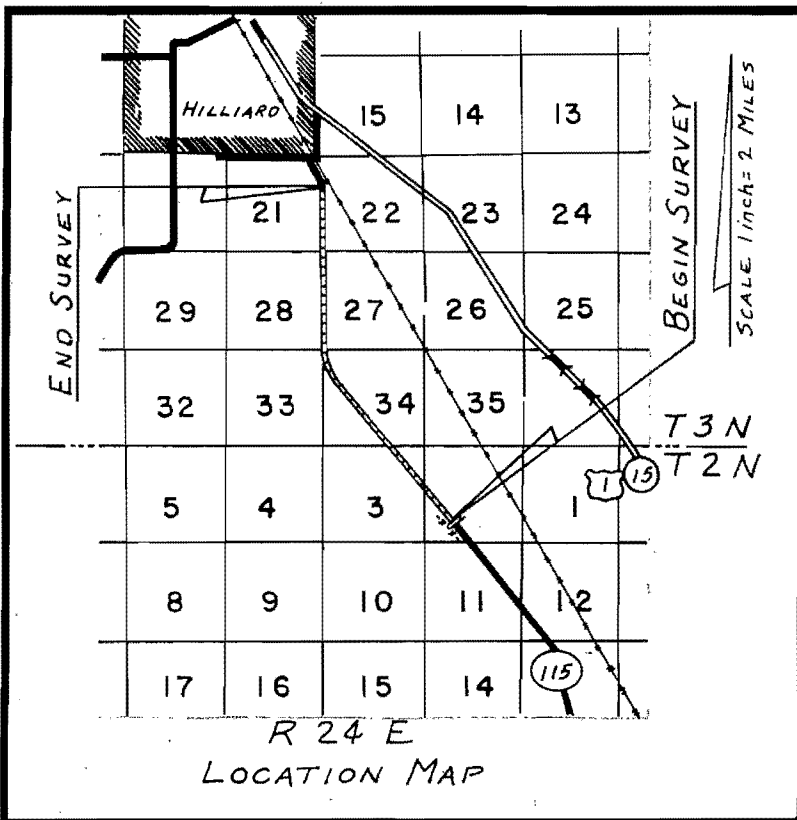
I HEREBY CERTIFY that the foregoing is a true copy of a Resolution

*Dooley*

adopted by the Board of County Commissioners of Nassau  
County, Florida at a meeting held on the 8<sup>th</sup> day of November  
A. D. 1977.

  
Clerk of the Board of County Commissioners  
of  
County, Florida





BEGIN SURVEY  
 STA. 230+00.00  
 STA. 230+00 - SEC. 74570-2601

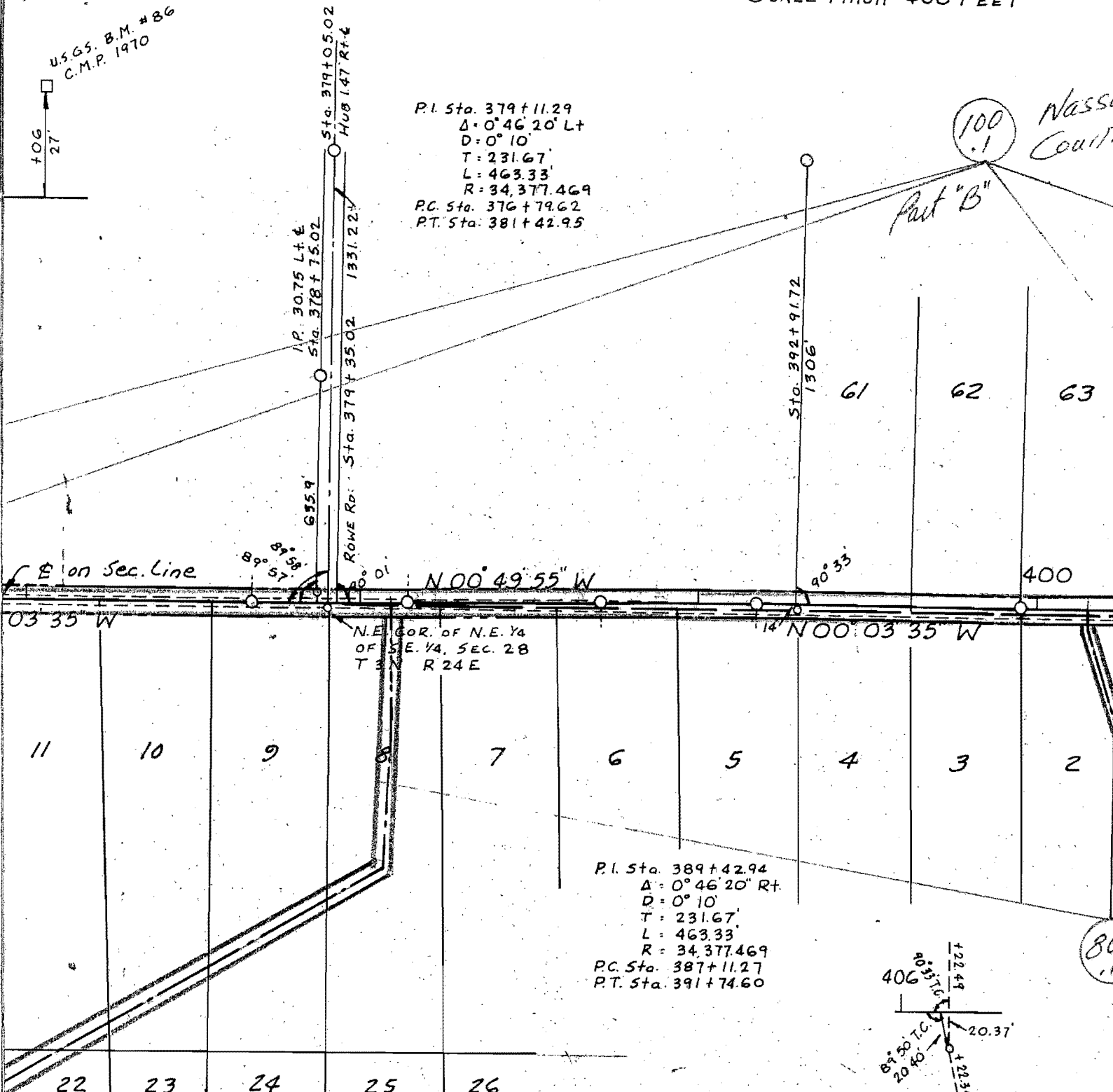
SCALE 1 inch = 400 FEET

U.S.G.S. B.M. #86  
C.M.P. 1970

P.I. Sta. 379+11.29  
 $\Delta = 0^\circ 46' 20''$  Lt  
 $D = 0^\circ 10'$   
 $T = 231.67'$   
 $L = 463.33'$   
 $R = 34,377.469'$   
 P.C. Sta. 376+79.62  
 P.T. Sta. 381+42.95

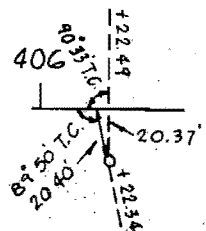
100  
NASSAU COUNTY

Part "B"



N.E. COR. OF N.E. 1/4  
OF S.E. 1/4, SEC. 28  
T 3 N R 24 E

P.I. Sta. 389+42.94  
 $\Delta = 0^\circ 46' 20''$  Rt  
 $D = 0^\circ 10'$   
 $T = 231.67'$   
 $L = 463.33'$   
 $R = 34,377.469'$   
 P.C. Sta. 387+11.27  
 P.T. Sta. 391+74.60



LATERAL DITCH R  
 STA. 0+00 TO STA. 0+42 TO STA. 0+84  
 35' Drain. Ease. C.

TOWN

NORTH FLORIDA FRUIT AND TRUCK FARMS

P.B. 0", Page 31

- LATERAL DITCH RT. STA. 380+91.63
- STA. 0+00.00 TO STA. 3+37.00 - N. 89° 18' 13" E.
- STA. 3+37.00 TO STA. 7+75.55 - S. 87° 57' 29" E.
- STA. 7+75.55 TO STA. 20+83.41 - S. 30° 02' 53" E.
- STA. 20+83.41 TO STA. 29+83.41 - S. 3° 12' 36" E.
- 35' Drain. Ease. (20' RT. & 15' Lt.)

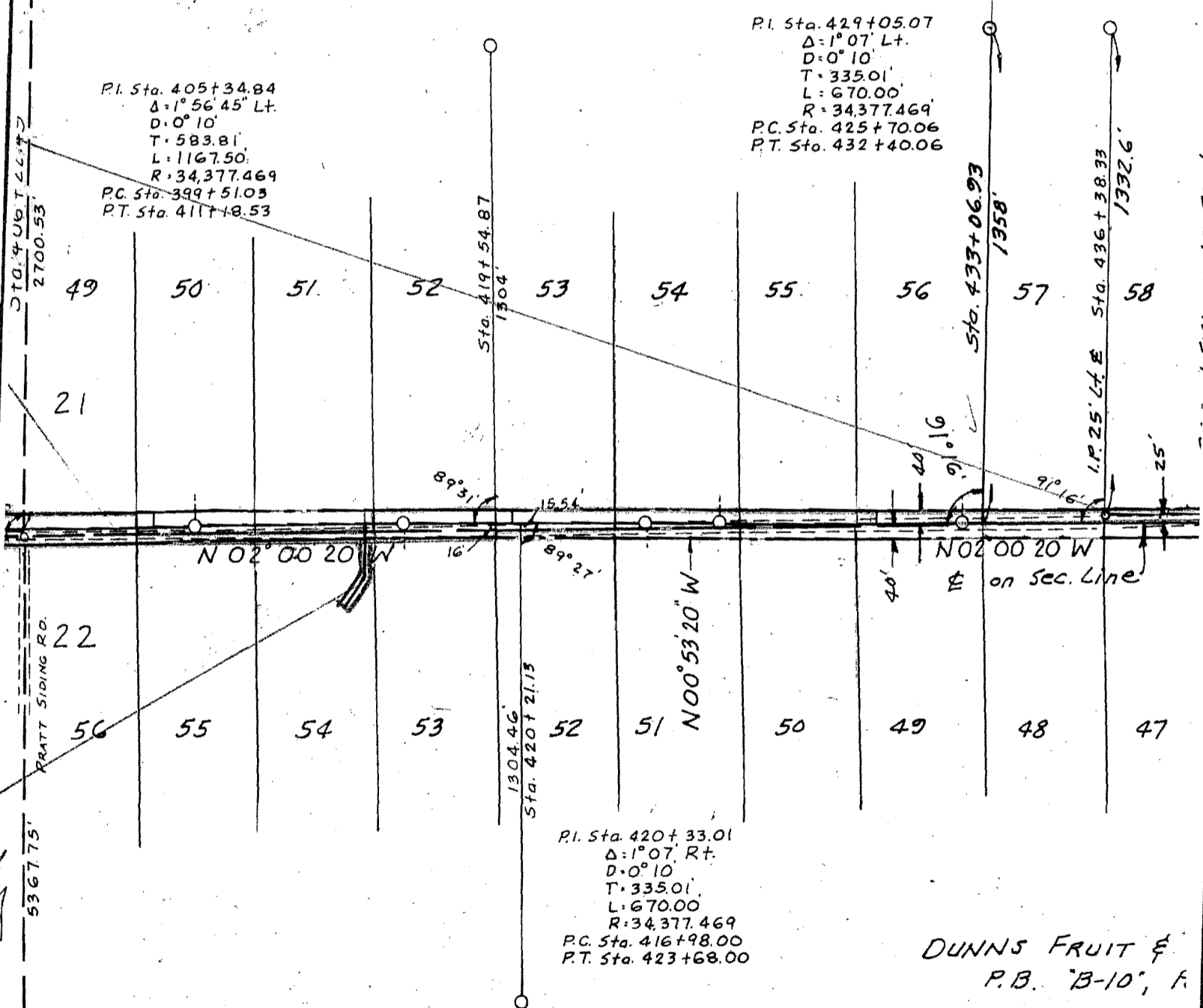


TOWNSHIP 2 NORTH N  
 TOWNSHIP 3 NORTH W

NORTH FLORIDA FR  
 P.B. "0", Page

24 EAST

NORTH FLORIDA FRUIT AND TRUCK FARMS  
 P.B. "0", Page 31



P.I. Sta. 405+34.84  
 $\Delta = 1^\circ 56' 45''$  Lt.  
 $D = 0^\circ 10'$   
 $T = 583.81'$   
 $L = 1167.50'$   
 $R = 34,377.469'$   
 P.C. Sta. 399+51.03  
 P.T. Sta. 411+18.53

P.I. Sta. 429+05.07  
 $\Delta = 1^\circ 07'$  Lt.  
 $D = 0^\circ 10'$   
 $T = 335.01'$   
 $L = 670.00'$   
 $R = 34,377.469'$   
 P.C. Sta. 425+70.06  
 P.T. Sta. 432+40.06

P.I. Sta. 420+33.01  
 $\Delta = 1^\circ 07'$  Rt.  
 $D = 0^\circ 10'$   
 $T = 335.01'$   
 $L = 670.00'$   
 $R = 34,377.469'$   
 P.C. Sta. 416+98.00  
 P.T. Sta. 423+68.00

DUNNS FRUIT &  
 P.B. "B-10", F.

LATERAL DITCH RT. STA. 415+92.00  
 STA. 0+00 To STA. 1+45 ~ N. 87° 59' 40" E.  
 STA. 1+45 To STA. 2+50 ~ S. 56° 57' 20" E.  
 35' Drain. Ease. (15' Rt. & 20' Lt.)

01+53.00  
 N. 89° 46' 13" E.  
 V. 73° 33' 13" E.  
 20' Lt.)

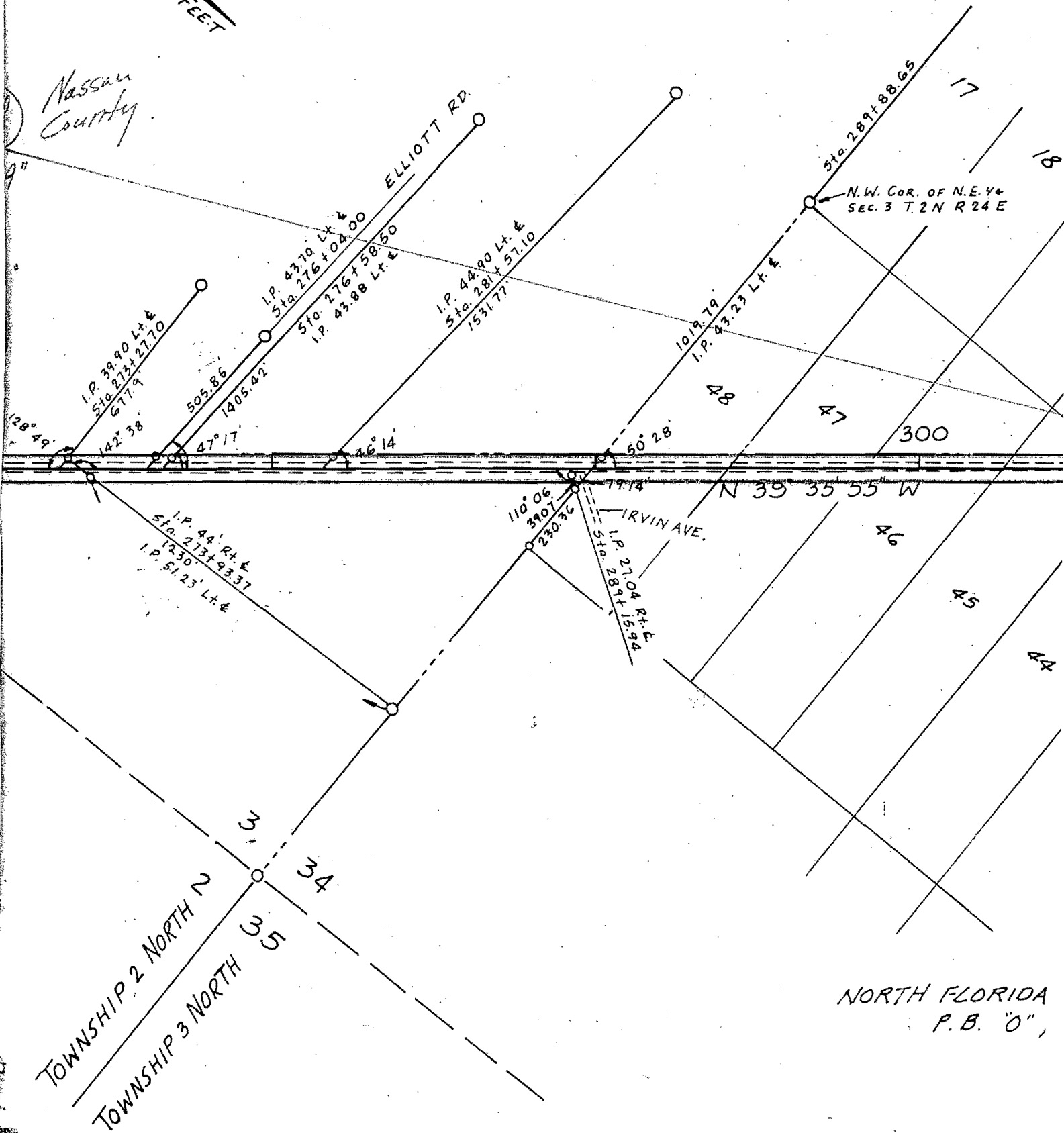
3 NORTH



NGE 24 EAST

SCALE 1 inch = 400 FEET

Nassau  
County



E 24 EAST

NORTH FLORIDA FRUIT AND TRUCK FARMS  
P.B. "O", Page 31

P.I. Sta. 405+34.84  
 $\Delta = 1^\circ 56' 45''$  Lt.  
 $D = 0^\circ 10'$   
 $T = 583.81'$   
 $L = 1167.50'$

P.I. Sta. 429+05.07  
 $\Delta = 1^\circ 07'$  Lt.  
 $D = 0^\circ 10'$   
 $T = 335.01'$   
 $L = 670.00'$   
 $R = 34377.469'$   
 P.C. Sta. 425+70.06  
 P.T. Sta. 432+40.06

33  
12.6'

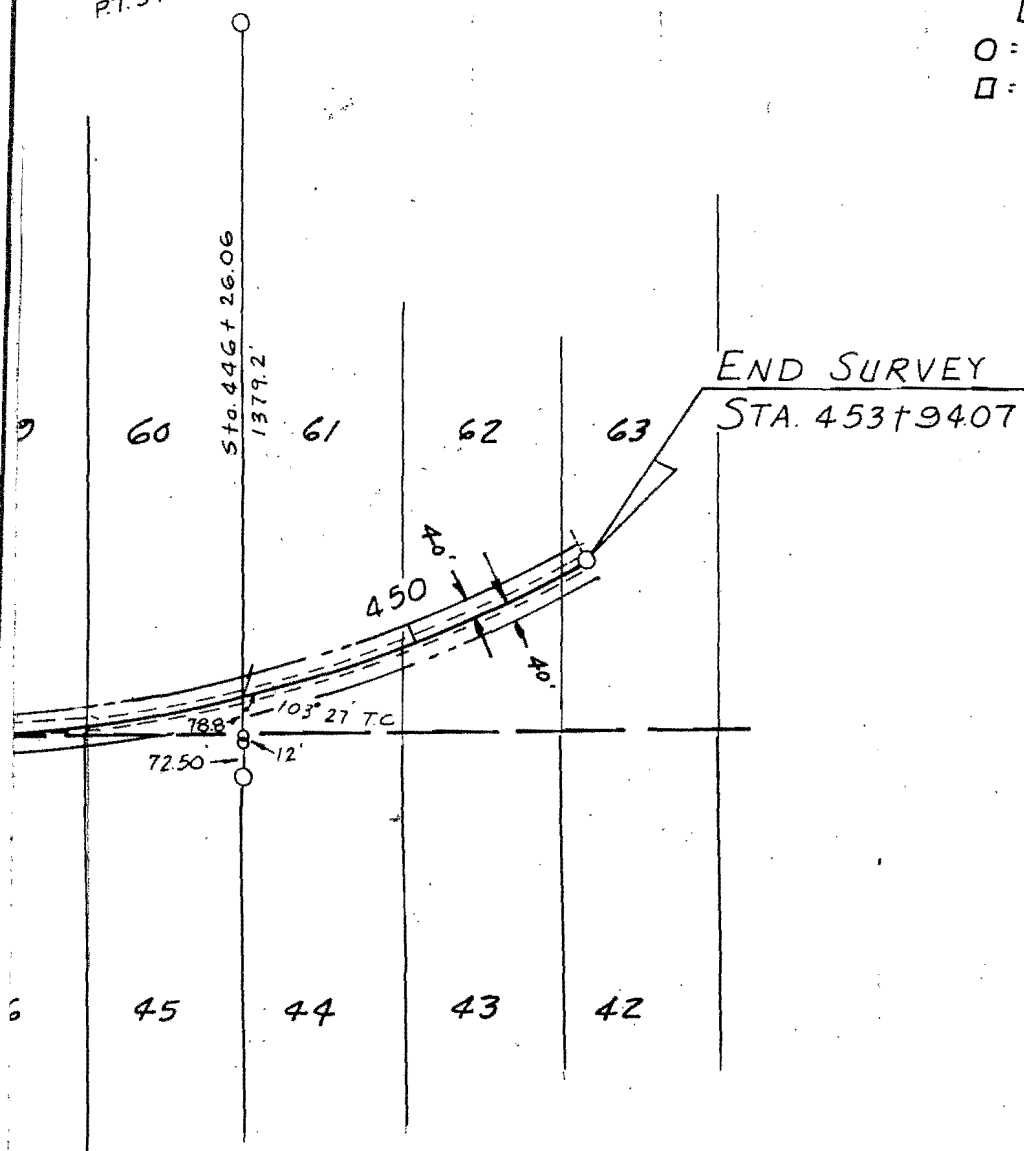
100 Nassau County

AND TRUCK FARMS

P.I. Sta. 446+89.30  
 Δ: 28° 48' 50" Lt.  
 D: 200  
 T: 735.92'  
 L: 1440.69'  
 R: 2864.789'  
 P.C. Sta. 439+53.38  
 P.T. Sta. 453+94.07

NOTE:  
 BEARINGS ARE PROJECTED FROM  
 SEC. 74570-2603  
 UNDERGROUND NOT SHOWN ON  
 THIS MAP  
 UNDERGROUND TEL. OWNED BY  
 NORTH FLORIDA TELEPHONE CO.  
 AVERAGE MAINTAINED R/W = 25'

LEGEND:  
 O = IRON PIPE  
 □ = CONC. MON.

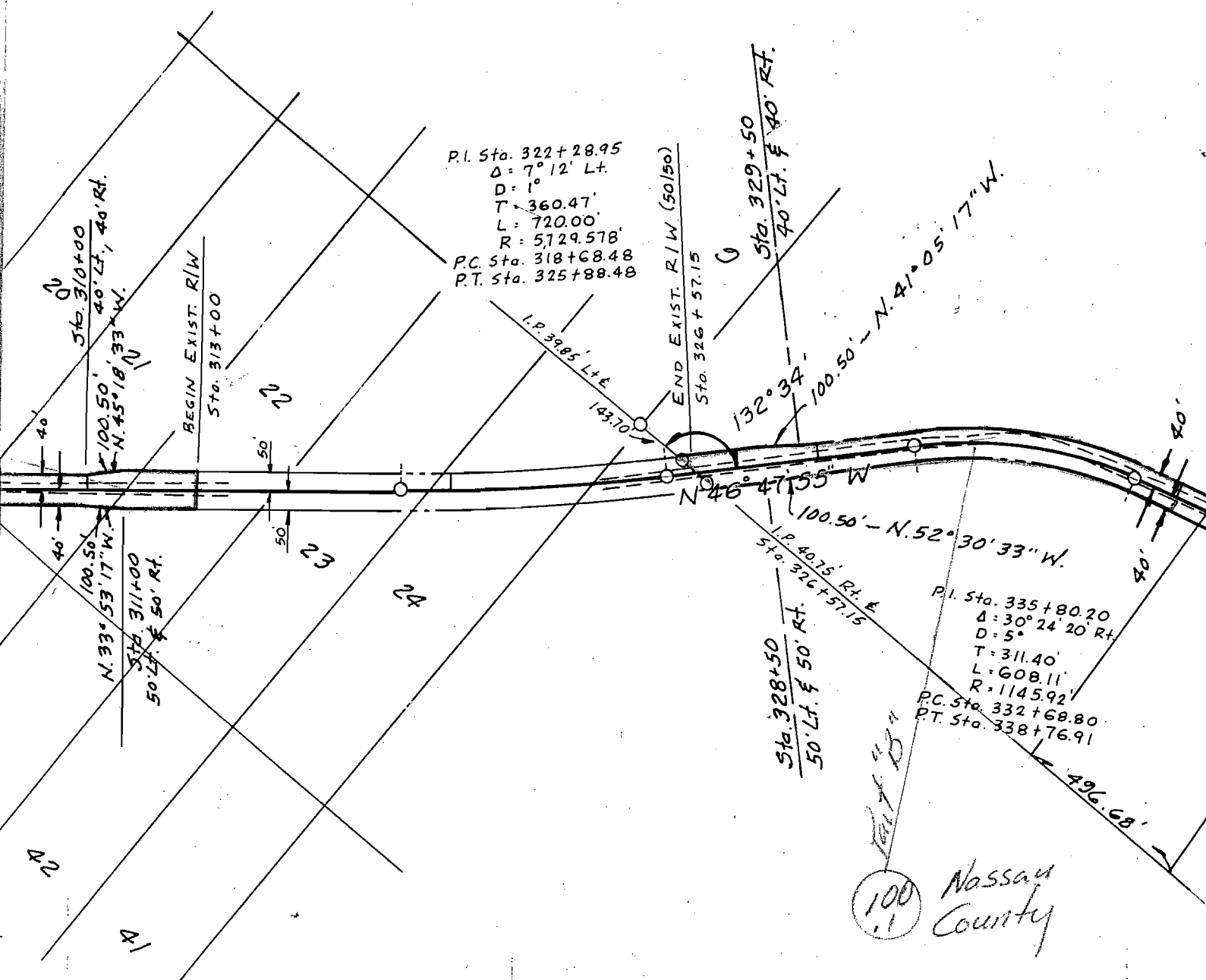


FARMS

STATE OF FLORIDA DEPARTMENT OF TRANSPORTATION			
RIGHT OF WAY MAP			
STATE ROAD NO. 5-115		NASSAU COUNTY	
	BY	DATE	APPROVED BY
DRAWN			<i>D.W. Skinner</i> DISTRICT EN
TRACED	T.B.	4-28-76	
CHECKED	J.C.B.	4-29-76	ENGINEER OF RIGHT
COMPARED			
INDEXED			STATE HIGHWAY EN
Rev. Ditch - 348	J.C.B.	6-15-77	
REVISION	BY	DATE	SECTION 74570-2605 SHEET 1 OF 3

100.1 & 800.1

FED. ROAD DIV. No.	STATE	F A PROJECT NO.	FISCAL YEAR	SHEET No.
3	FLA.			



AND TRUCK FARMS

100  
Nassau  
County

NOTE:  
 BEARINGS ARE PROJECTED FROM  
 SEC. 74570-2603  
 UNDERGROUND NOT SHOWN ON  
 THIS MAP  
 UNDERGROUND TEL. OWNED BY  
 NORTH FLORIDA TELEPHONE CO.  
 AVERAGE MAINTAINED R/W = 25'

LEGEND:  
 O = IRON PIPE  
 □ = CONC. MON.

P.I. Sta. 446+89.30  
 Δ = 28°48'50" Lt.  
 D = 2°  
 T = 735.92'  
 L = 1440.69'  
 R = 2864.789'  
 P.C. Sta. 439+53.38  
 P.T. Sta. 453+94.07